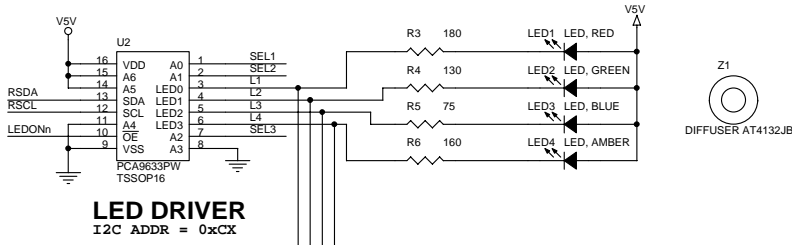
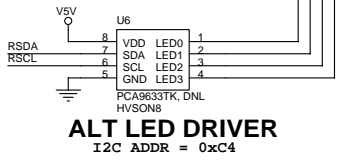


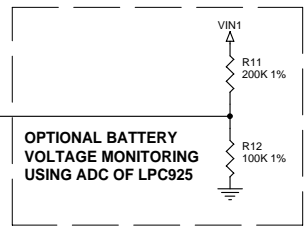
I2C BUFFER



LED DRIVER
I2C ADDR = 0xCX

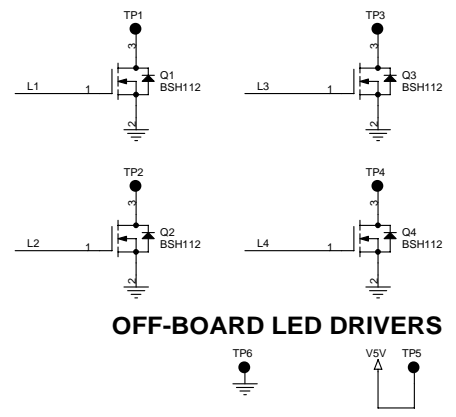


ALT LED DRIVER
I2C ADDR = 0xC4

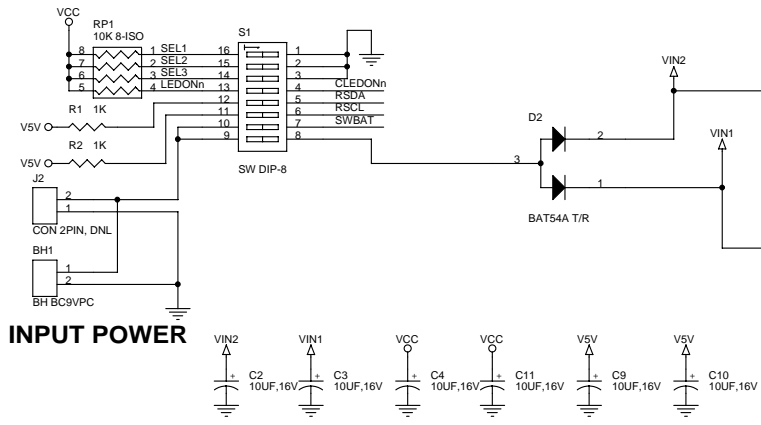


OPTIONAL BATTERY VOLTAGE MONITORING USING ADC OF LPC925

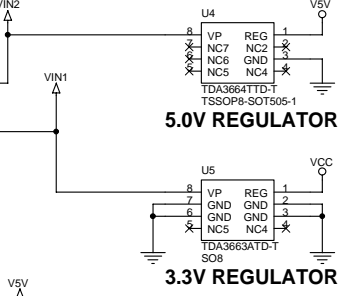
- SW1 BOARD ADDRESS 0 1<>0
- SW2 BOARD ADDRESS 1 1<>0
- SW3 BOARD ADDRESS 2 1<>0
- SW4 CABLE LED PWM ENABLE
- SW5 BUS RSDA PULLUP ENABLE
- SW6 BUS RSCL PULLUP ENABLE
- SW7 BUS POWER CONNECT
- SW8 BOARD POWER OFF/ON OFF<>ON



OFF-BOARD LED DRIVERS

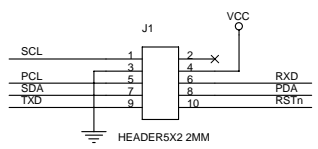


INPUT POWER

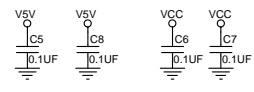


5.0V REGULATOR

3.3V REGULATOR



ICP HEADER



Future Designs, Inc. Huntsville, AL		FDI
Title: PCA9633 Demo Board		
Size: Document Number PCA9633DEMO	Date: Friday, December 09, 2005	Sheet: 1 of 2 Rev: 2